

# ECLIPSE<sup>®</sup>

APPLICATION CASE STUDY



**Magnetrol<sup>®</sup>**  
HYGIENIC MEASUREMENT  
SOLUTIONS

**ECLIPSE<sup>®</sup>**  
GUIDED WAVE RADAR



**HART<sup>®</sup>**  
COMMUNICATION PROTOCOL



## Eclipse<sup>®</sup> Guided Wave Radar for Fruit Juice Ohmic Heating Pilot Plant

Submitted by Karl Bambynek, Magnetrol<sup>®</sup> International, Incorporated ( UK Office)

### Application:

The customer required a continuous, reliable and repeatable volumetric measurement in small process vessels. We quoted against two competitors, and won the order with our unique ability to make a measurement close to and following the profile of the three vessels.

### Problem:

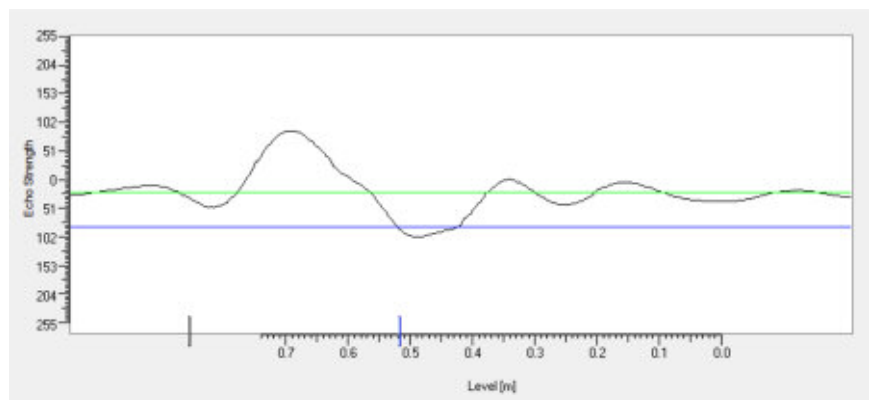
The product measured was a wide variety of fruit juices that exhibited varying amounts of natural foam along with stirrers in a 17.7" (450 mm) diameter pots. The industry standard level would have been E+H. However, as these vessels were so small, they would have insisted on the probe being kept away from the side walls, making installation difficult with the mixers located in the vessels.

### Solution:

The tanks were fitted with Magnetrol<sup>®</sup> Eclipse<sup>®</sup> Model 705-510A-131 Guided Wave Radar level transmitters and 7MF-E3PN-074 GWR probes. Performance with bent probes was optimized by utilizing PACT<sup>ware</sup><sup>™</sup>.

### Result:

After a careful evaluation with the customer, moving the mounting positions achieved successful measurement.



**Magnetrol<sup>®</sup>**

5300 Belmont Road • Downers Grove, Illinois 60515-4499 • 630-969-4000 • Fax 630-969-9489 • www.magnetrol.com  
145 Jardin Drive, Units 1 & 2 • Concord, Ontario Canada L4K 1X7 • 905-738-9600 • Fax 905-738-1306  
Heikensstraat 6 • B 9240 Zele, Belgium • 052 45.11.11 • Fax 052 45.09.93  
Regent Business Ctr., Jubilee Rd. • Burgess Hill, Sussex RH15 9TL U.K. • 01444-871313 • Fax 01444-871317

**BULLETIN: 57-229.0**  
**EFFECTIVE: May 2012**

Copyright © 2012 Magnetrol International, Incorporated. All rights reserved.

Magnetrol, Magnetrol logotype and Eclipse are registered trademarks of Magnetrol International, Incorporated.  
PACTware is trademark of PACTware Consortium.